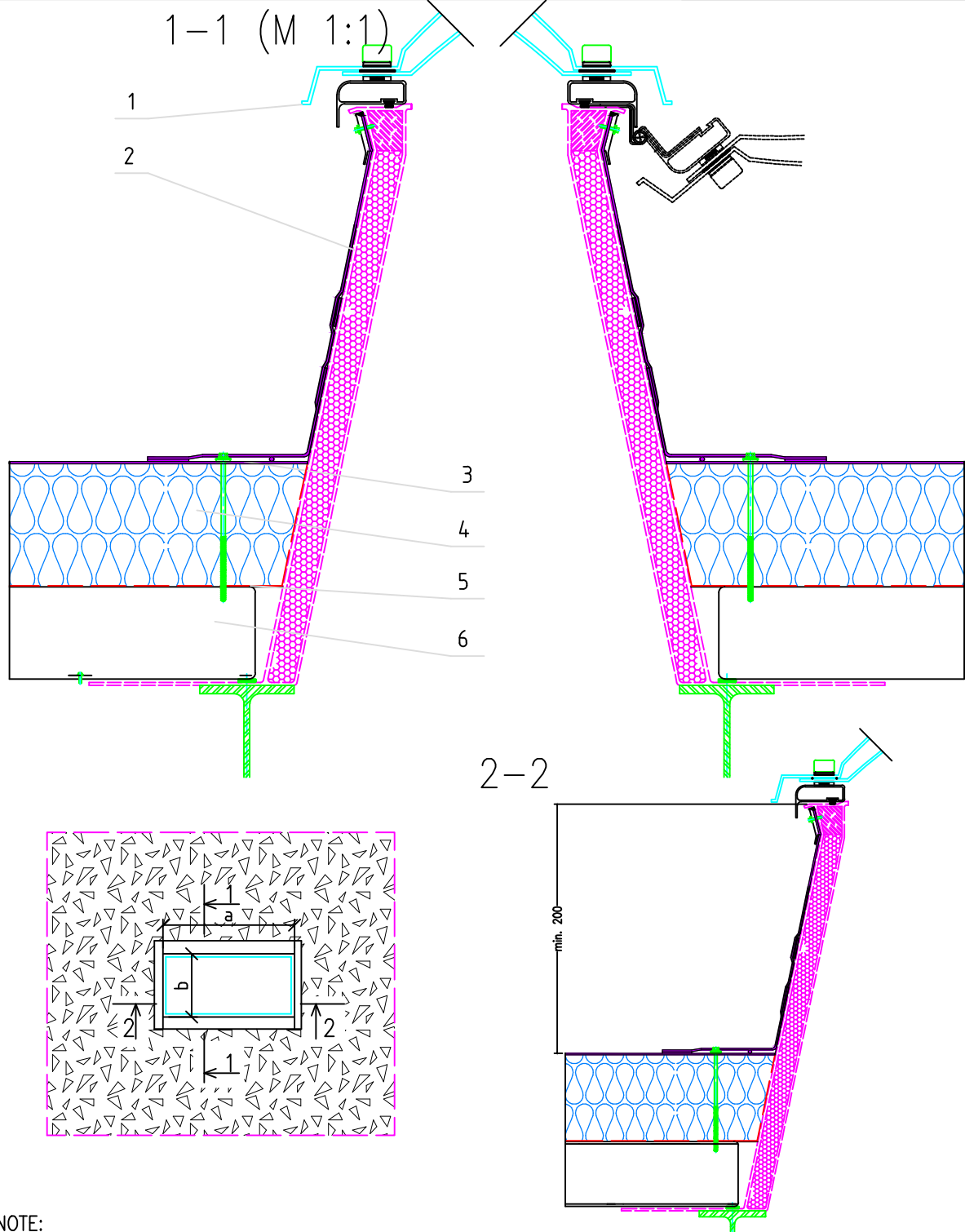


Skylights Alux – montaža na podkonstrukciju

R:\Marketing\01 CGP\Logo\Akripol logo final_01-2013.jpg



NOTE:

- In sky domes with a fire opening mechanism, the height of the light-transmitting portion should be taken into account in order to prevent its damage when the dome is opened. The minimum recommended height of the crown above the roofing is 300 mm. When the crown is too low, a non-standard crown or an additional substructure should be used.

Pos.	Description	Pos.	Description
1	Sky dome	5	Vapor barrier
2	Crown PES	6	Insulated panel (like Trimo)
3	Waterproof membrane – PVC membrane		
4	Thermal insulation		

All the details are the property of the company Akripol®

On the flat roof – light warm roof – opening type 4 (Crown PES)