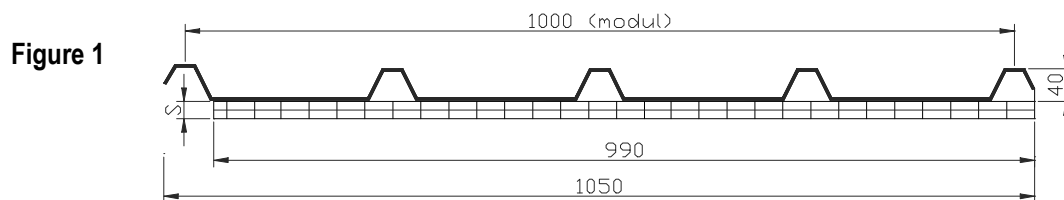


## ***APAN panels***

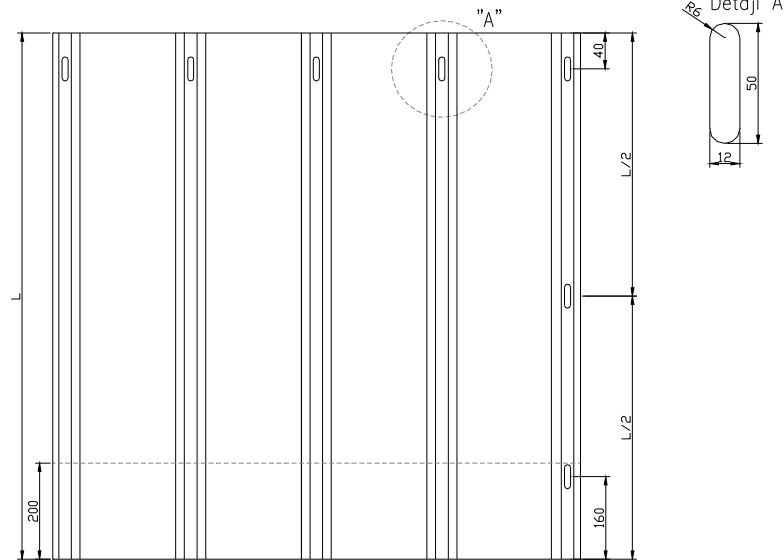


### **1. Structure of APAN panel**

On Fig. 1 is example of basic cut through of APAN panel 1000. Upper layer is thermoformed acrylic sheet 3 mm in opal color, lower cell structured polycarbonate plate in transparent color. Polycarbonate plates are drawn schematic, different thicknesses has different number of cells.

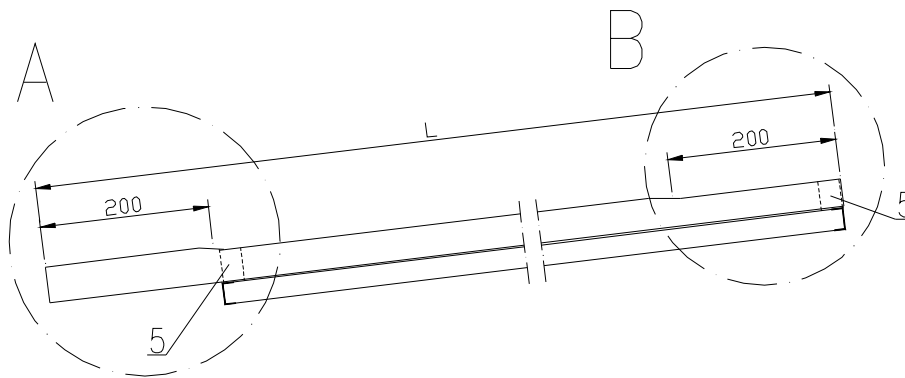


**Figure 2**



On Fig. 2 is ground of acrylic plate.

Longitudinal cut through of APAN panel. Detail A is overlap of element and detail B is overlapped with detail A of next assembled APAN panel. Polycarbonate closing element is marked as No. 5. (Fig. 3).



**Figure 3**

## 2. Technical data of APAN panel

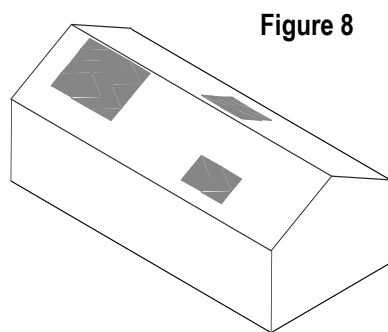
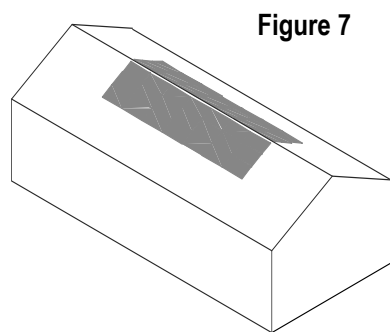
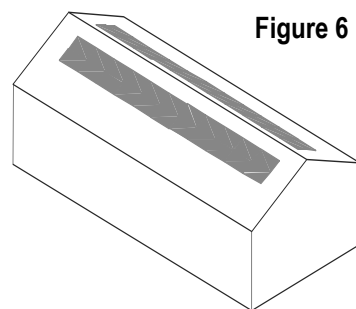
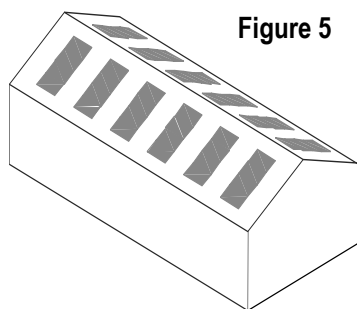
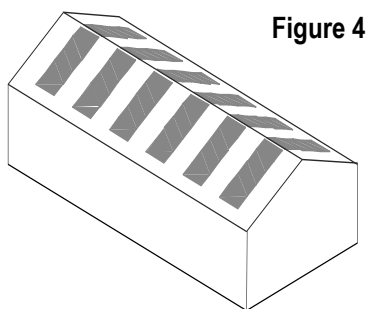
Characteristics	APAN panel thickness					
	1-layer	+PPC 10mm	+PPC 16mm	+PPC K 16mm	+PPC K 25mm	+PPC K 32mm
Light transmission	83 %	70 %	63 %	60 %	58 %	55 %
Temperature range for continuous use- °C	from - 40 to + 100 °C	from - 40 to + 100 °C	from - 40 to + 100 °C	from - 40 to + 100 °C	from - 40 to + 100 °C	from - 40 to + 100 °C
Thermal insulation; k- W/m2K	4,50	1,85	1,55	1,38	1,25	1,15
Noise insulation- dB DIN-52210	18	20	25	28	30	32

Upper table is valid for APAN panel type SP- M SNV 900 x 2400 or 900 x 3000 and 1000 x 2400 or 1000 x 3000.

- Burdening 1250 N/m<sup>2</sup>,
- Fire test performance (DIN- 4102): B2,
- Minimum installation angle >60,
- Linear thermal expansion coefficient (10/K):  $7 \times 10^{-6}$ ,
- Maximum length between supports 1500 mm.

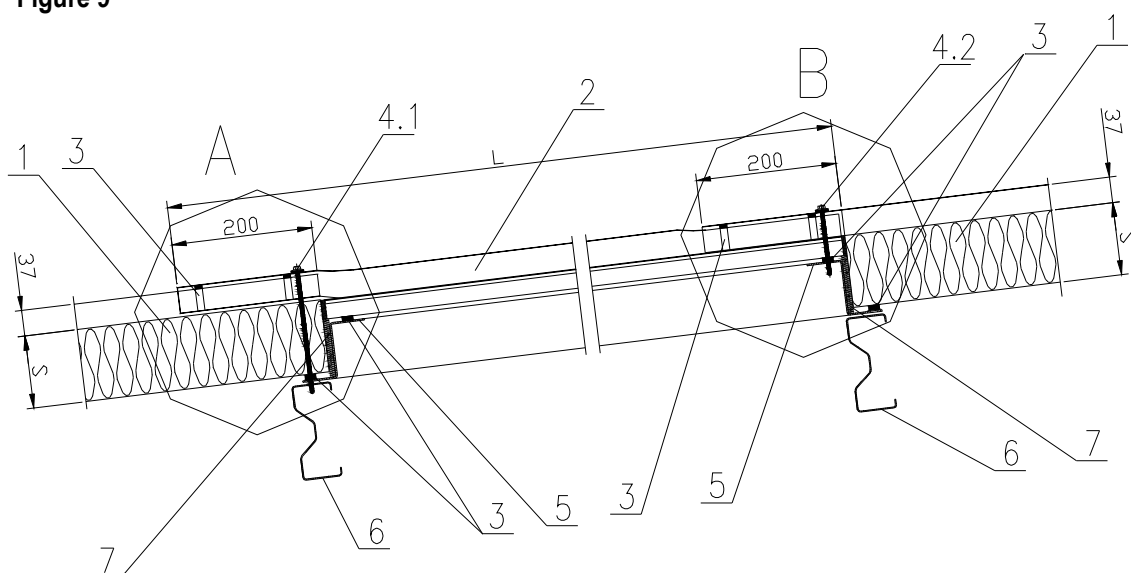
### 3. Application of APAN panels

- APAN panels can be arranged as it is presented on Fig. 4- 8.



*Installation of APAN panel, between SNV panels (Fig. 9).*

Figure 9



- 1) Panel Trimoterm SNV
- 2) APAN
- 3) Compressed expansive sealing 3- 6 x 15 mm
- 4.1) Kniping screw (6,3 x (H+ S+ 100 ) mm )
- 4.2) Kniping screw (6,3 x (S + 80 ) mm )
- 5) Frame of hop – Z profiles (60 x H x 40 x 3 mm )
- 6) Support construction
- 7) Thermal insulating wool DP-3

- APAN panels can be installed on roof of SNV panels in the same way as SNV panels.
- Panels are screwed on roof underconstruction.
- Under panels must be installed Z-frames, for support and distance between SNV and APAN panels.
- Screwing is done in same way as for SNV panels.

*APAN panels could be installed all over the roof. All combinations of installation are possible*

**Contact:**

**AKRIPOL D.D.**

**Prijateljeva cesta 11**

**SI- 8210 Trebnje**

**Slovenia**

**tel.: +386 (0)7 34 81 604**

**fax: .: +386 (0)7 34 81 652**

**e-mail: akripol@akripol.si**

**www.akripol.si**

**APAN panels**

**www.akripol.si**